

Title
Converter 8V - 42V DC in, 5V 1.5A out

Sheet * of *

Variant:
[No Variations]
Revision: *

File: 5V 1.5A COT Converter.SchDoc

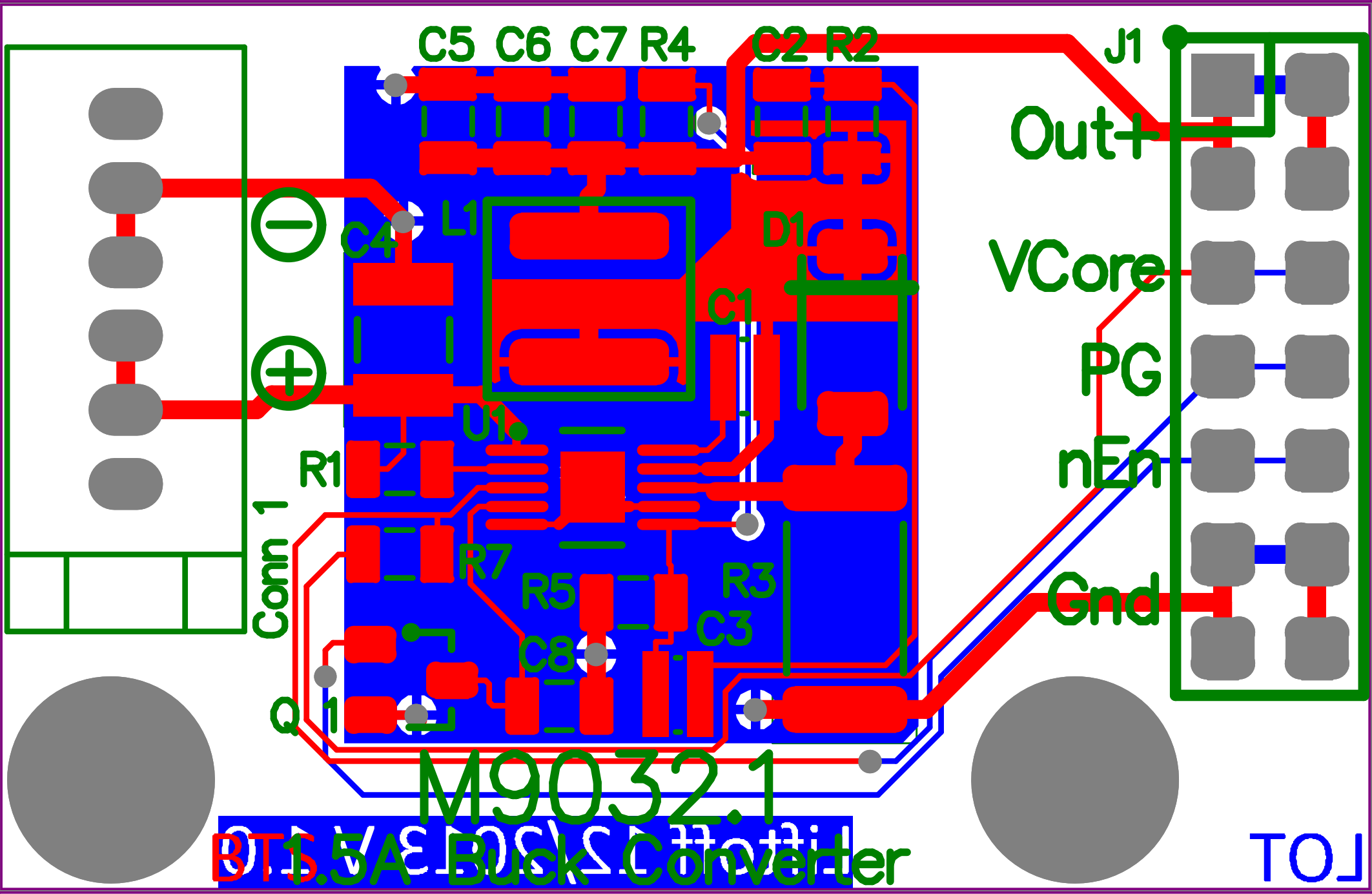
Created by:
D.I. Gerhard Kreuzer
Checked by:
*

Number:
M9032.1

Date: 05.01.2014
Time: 17:50:44

liftoff
www.liftoff.at

Dep.: GeoMonitor
Karlgasse 6
3001 Tulln an der Donau
Austria
Tel: +43 2273 80222



M9032.1
1.5A Buck Converter

TO

Comment	Description	Designator	Footprint	LibRef	Quantity
100nF	Ceramic Capacitor	C1, C3	CC1220-0508 (reversed)	CERCO	2
1nF	Ceramic Capacitor	C2	SMD C 2012 (0805)	CERCO	1
10µF / 50V	Ceramic Capacitor	C4	CAPC1210(3225)100_N	CERCO	1
22nF	Ceramic Capacitor	C5, C8	SMD C 2012 (0805)	CERCO	2
10µF / 10V	Ceramic Capacitor	C6, C7	SMD C 2012 (0805)	CERCO	2
CON4		Conn 1	Mini-Clamp 4 p Type B	CON4	1
PMEG6030EP,115	Schottky Diode	D1	SOD 128	DIODE SCHOTTKY	1
CON14		J1	CONN14	CON14	1
XAL5050-153		L1	XAL50x0-153	INDUCTOR IRON	1
2N7002K	N-Channel Enhancement Mode Field Effect Transistor	Q 1	SO-G3 1-3-2 pinning	2N7002K	1
158k	Resistor 1/4 Watt	R1	SMD R 2012 (0805)	R	1
62k	Resistor 1/4 Watt	R2	SMD R 2012 (0805)	R	1
R100	Resistor 1/4 Watt	R3	RESC2512(6432)_N	R	1
4k7	Resistor 1/4 Watt	R4, R5	SMD R 2012 (0805)	R	2
10k	Resistor 1/10Watt	R7	SMD R 2012 (0805)	R	1
Screw	Screw Hole	Screw1, Screw2	Screw3mm	Screw	2
LM25011		U1	MUC10A_N	PM-REG-LM25011Q-IL1	1